



PROPAGATION METHOD

- STEM CUTTING LEAF CUTTING
- ROOT DIVISION LAYERING
- BULB DIVISION SEEDS
- OTHER



- POISONOUS NO YES *mildly*
- ROOTS LEAVES FLOWERS
- POISONOUS TO PEOPLE PETS



NOTES AND THINGS I WANT TO REMEMBER

.....

.....

.....

.....

.....

.....

.....

.....

.....

.....

4

Created & Provided by Surcee Farm (SurceeFarm.us)

WHERE WILL YOU GROW TODAY?



MY PLANT'S PROFILE



HOUSEPLANT COMMON NAME *Porcelainflower*.....

BOTANICAL NAME *Hoya Carnosa*.....

CULTIVAR

NICKNAME I HAVE GIVEN

ADOPTION DATE SOURCE *Surcee Farm*..... COST

POTENTIAL HIGHT *12"*..... WIDTH *12-20' Vines*

CARE NEEDS

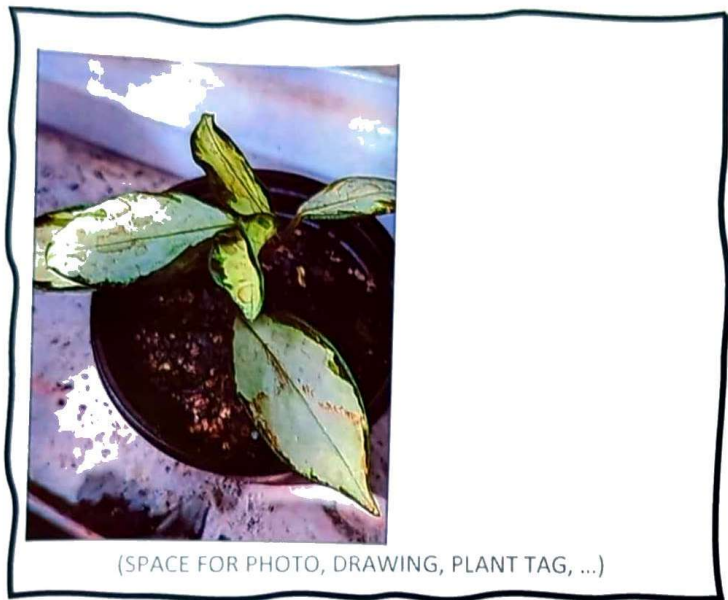


- LIGHT/SUN
- LOW INDOOR LIGHT
 - MEDIUM INDOOR LIGHT
 - BRIGHT INDIRECT INDOOR LIGHT
 - BRIGHT DIRECT INDOOR LIGHT
 - OTHER



- WATER BEFORE WATERING
- LET SOIL DRY OUT COMPLETELY
 - 1 INCH OF TOPSOIL DRY
 - KEEP SOIL EVENLY MOIST
 - OTHER

1



(SPACE FOR PHOTO, DRAWING, PLANT TAG, ...)



IDEAL TEMPERATURE

- STANDARD FOR HOUSEPLANTS, 65° - 80°F
- DAMAGE LIKELY AT 50°F 40° TO 30°F
- OTHER



HUMIDITY

- NOT PICKY
- LIKES HUMIDITY
- DOESN'T LIKE HUMIDITY



POSSIBLE PESTS AND PROBLEMS ..root..rot.....

..... 2



FERTILIZER

GIVE EVERY4..... WEEKS DURING THE GROWING SEASON, WHICH IS

- WINTER SPRING SUMMER FALL



PRUNING NEEDS

- CUT AWAY UNHEALTHY LEAVES OR STEMS
- TRIM TO HELP BE FULLER/BUSHIER
- OTHER ..light..pruning..only..to.....
Control size as needed



REPOTTING NEEDS

- STANDARD
- QUICK GROWER, NEEDS ON REGULAR BASIS
- LIKES TO BE IN TIGHT/SMALLER POT
- OTHER



IDEAL SOIL

- WELL BALANCED (STANDARD POTTING MIX)
- GOOD DRAINAGE (POTTING MIX WITH ADDED PERLITE OR SAND)
- RETAINS MOISTURE (POTTING MIX WITH ADDED PEAT MOSS)

3